



### 2-part sunblind output with increased functionality



The KNX sunblind output for surface mount switches two independent sunblind circuits. The outputs can be positioned directly. All electrical connections are pluggable.

Type	Part No.	Net price per unit
gesis EIB V-0/2W SI Three-phase main supply connection	83.020.0211.0 (output A1 → L1; A2 → L2)	
gesis EIB V-0/2W SI 1PH Single-phase main supply connection	83.020.0211.2 (5 pole)	
gesis EIB V-0/2W SI SP Single-phase main supply connection	83.020.0211.4 (3 pole)	
<b>Infeed:</b> Main supply/KNX	230/400 V~, 50..60 Hz, max. 16 A; KNX	
<b>Outputs:</b> Rated voltage Switching current	230 V AC max. 16 A ohmic load	

### Combined actuator with 2-part switching and 1-part sunblind output



The combined KNX output for surface mount has two switching outputs and one sunblind output. All electrical connections are pluggable.

Type	Part No.	Net price per unit
gesis EIB V-0/2+1W Three-phase main supply connection	83.020.0212.0 (output A1 → L1; A2 → L2; A3 → L3)	
gesis EIB V-0/2+1W 1PH Single-phase main supply connection	83.020.0212.2 (5 pole)	
gesis EIB V-0/2+1W SP Single-phase main supply connection	83.020.0212.4 (3 pole)	
<b>Infeed:</b> Main supply/KNX	230/400 V~, 50..60 Hz, max. 16 A; KNX	
<b>Outputs:</b> Rated voltage Switching current – switching output A1, A2 Switching current – sunblind output A3	230 V AC max. 16 A ohmic load max. 8 A ohmic load	

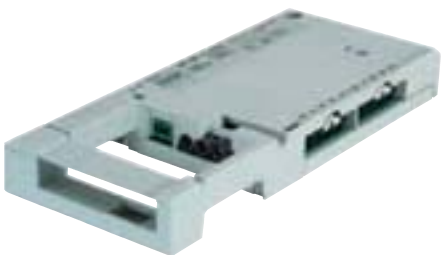
### 2-part switching/dimming output



The KNX switching/dimming output for surface mount has two independent outputs for controlling dynamic electronic ballasts for lighting control. All electrical connections are pluggable.

Type	Part No.	Net price per unit
gesis EIB V-0/2SD Three-phase main supply connection	83.020.0213.0 (output A1 → L1; A2 → L2)	
gesis EIB V-0/2SD 1PH Single-phase main supply connection	83.020.0213.2 (5 pole)	
gesis EIB V-0/2SD SP Single-phase main supply connection	83.020.0213.4 (3 pole)	
<b>Infeed:</b> Main supply/KNX	230/400 V~, 50..60 Hz, max. 16 A; KNX	
<b>Outputs:</b> Rated voltage Switching current Control output	230 V AC max. 16 A ohmic load 1 – 10 V / max. 50 mA (passive)	

### 6-part switching output



The 6-part KNX switching output for surface mount has six independent switchable outputs. Three outputs each are combined in a 5 pole connector. All electrical connections are pluggable.

Type	Part No.	Net price per unit
gesis EIB V-0/6 Three-phase main supply connection	83.020.0214.0 (output A1/A4 → L1; A2/A5 → L2; A3/A6 → L3)	
<b>Infeed:</b> Main supply/KNX	400 V~, 50..60 Hz, max. 16 A per phase conductor; KNX	
<b>Outputs:</b> Connection Rated voltage Switching current	combined with three outputs in a 5 pole connector (e.g. A1, A2, A3, N, ground) 230 V AC max. 16 A ohmic load	

## 2-part sunblind output



The KNX sunblind output for surface mount switches two independent sunblind circuits. All electrical connections are pluggable.

Type	Part No.	Net price per unit
geis EIB V-0/2W Three-phase main supply connection	83.020.0216.0 (output A1 → L1; A2 → L2)	
geis EIB V-0/2W 1PH Single-phase main supply connection	83.020.0216.2 (5 pole)	
<b>Infeed:</b> Supply	230/400 V~, 50..60 Hz, max. 16 A; KNX	
<b>Outputs:</b> Rated voltage Switching current	230 V AC max. 16 A ohmic load	

## EnOcean-KNX 56-part gateway with 4 switching outputs



The gateway of the EnOcean radio technology to KNX manages 170 EnOcean telegrams and transfers them to 56 KNX objects. Independently from this four switching outputs are available. All electrical connections are pluggable.

Type	Part No.	Net price per unit
geis EIB V-56/4 RC Three-phase main supply connection	83.020.0220.0 (output A1 → L1; A2 → L2; A3/A4 → L3)	
geis EIB V-56/4 RCSP Single-phase main supply connection	83.020.0220.1 (3 pole)	
geis EIB V-56/4 B RC Three-phase main supply/antenna connection	83.020.0220.2 (output A1 → L1; A2 → L2; A3/A4 → L3)	
geis EIB V-56/4 B RCSP Single-phase main supply/antenna connection	83.020.0220.3 (3 pole)	
<b>Infeed:</b> Main supply/KNX	230/400 V~, 50..60 Hz, max. 16 A; KNX	
<b>Outputs:</b> Rated voltage Switching current	230 V AC max. 16 A ohmic load	

## Antenna for EnOcean devices with external antenna



The 868.6 MHz antenna is suitable for connection to Wieland **geis** devices with SMA socket. The black antenna can be fastened with a magnetic foot and has a 2.5m connection cable.

Type	Part No.	Net price per unit
Antenne	83.020.0503.0	
Antenna – 868.6 MHz antenna – Fastened with magnetic foot – incl. approx. 2.5m connection cable and SMA plug		

## 4-part switching output with increased functionality



The 4-part KNX switching output for surface mount has four independent switchable outputs. All electrical connections are pluggable.

Type	Part No.	Net price per unit
geis EIB V-0/4 B	83.020.0225.0	
geis EIB V-0/4 B 1Ph1 Single-phase L1	83.020.0225.1 (5 pole)	
geis EIB V-0/4 B 1Ph Single-phase L2	83.020.0225.2 (5 pole)	
geis EIB V-0/4 B 1Ph3 Single-phase L3	83.020.0225.3 (5 pole)	
geis EIB V-0/4 B SP Single-phase	83.020.0225.4 (3 pole)	
<b>Infeed:</b> Main supply/KNX	230/400 V~, 50..60 Hz, max. 16 A; KNX	
<b>Outputs:</b> Rated voltage Switching current	230 V AC max. 16 A ohmic load	